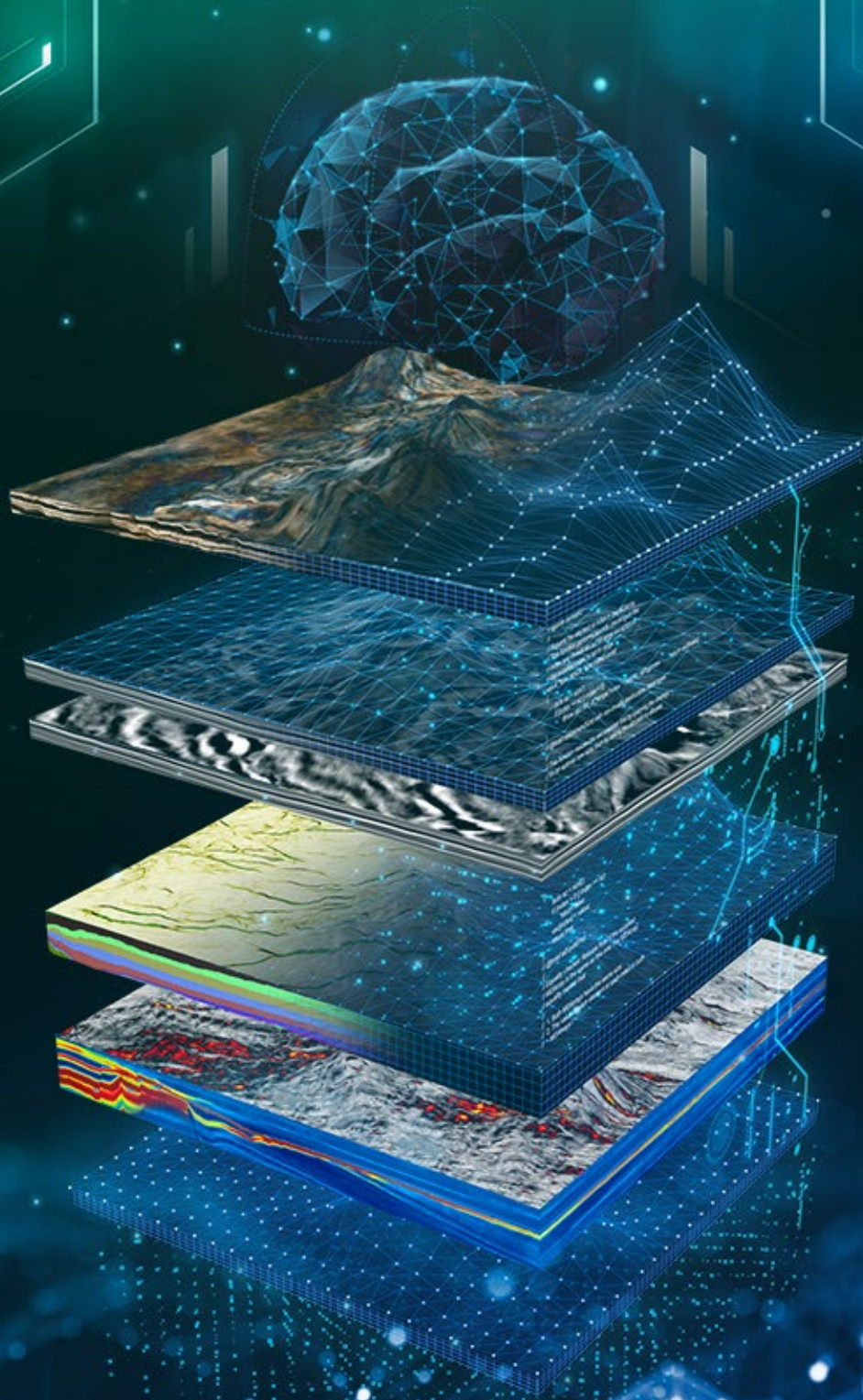


PALEOSCAN™

Global Seismic Interpretation Platform



DONGLE KEY LICENSE
Installation Procedure

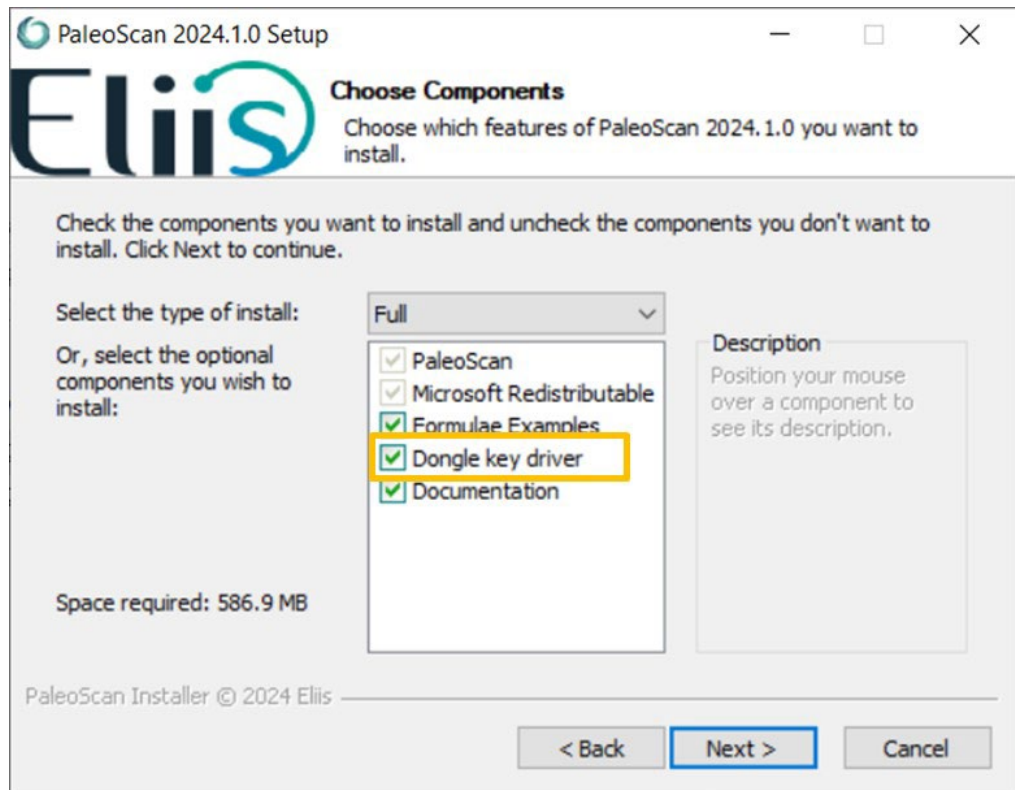


Table of Contents

A.	Installing the FlexNet dongle key driver	3
B.	Plug in the FlexNet USB Dongle Key	3
C.	Activation	3
1.	Select the dongle key license from PaleoScan™	4
2.	Start PaleoScan™	6
a)	If the local server value is set to No	6
b)	If the local server value is set to Yes	7
D.	Common issues.....	8
1.	The local server does not start	8
a)	Define a custom port	8
b)	Another server is running	8
2.	The dongle key is not detected.....	8
a)	Drivers are missing	8

A. Installing the FlexNet dongle key driver

The dongle key drivers are included inside the PaleoScan™ setup package. During the installation process, the **Dongle key driver** must be checked.



B. Plug in the FlexNet USB Dongle Key

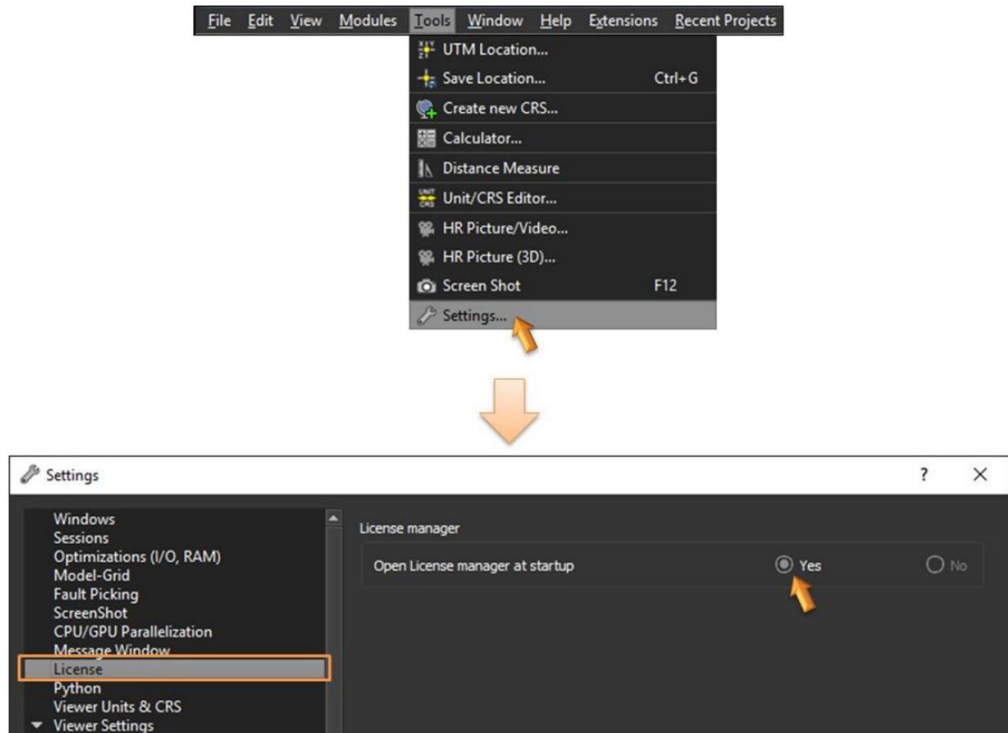
Now you have installed the FlexNet dongle key driver, please plug in the FlexNet USB dongle key into your computer.

C. Activation

At this stage, it is assumed that a valid license file has been received from the Eliis team.

- Open PaleoScan™, the License Manager should appear. If the License Manager does not present itself, the user must force its opening from the PaleoScan™ settings:
 - From the PaleoScan™ **Tools** file menu, go to **Settings** and click on the License section, and check the option **Open License Manager at start-up**:

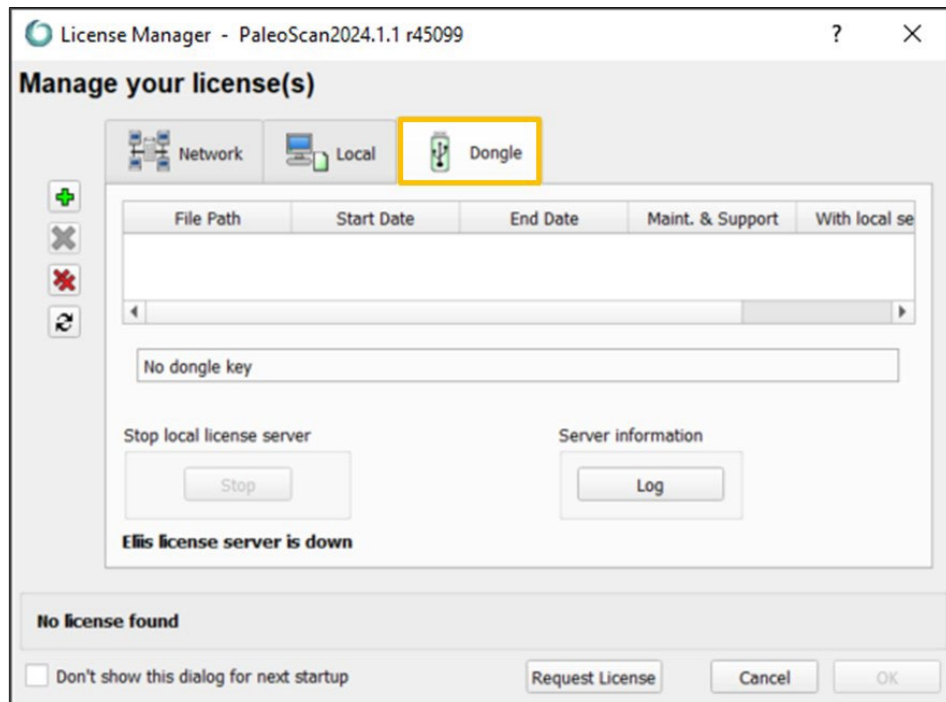
PaleoScan™ dongle key installation procedure



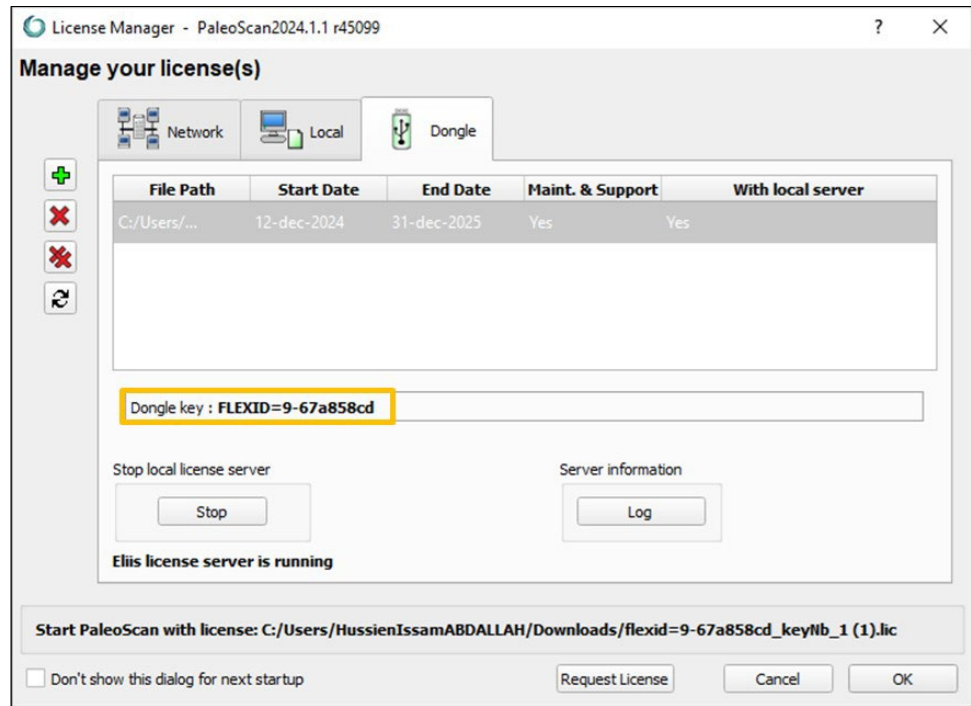
- Close PaleoScan™ and restart the software. The License Manager should present itself.


1. Select the dongle key license from PaleoScan™

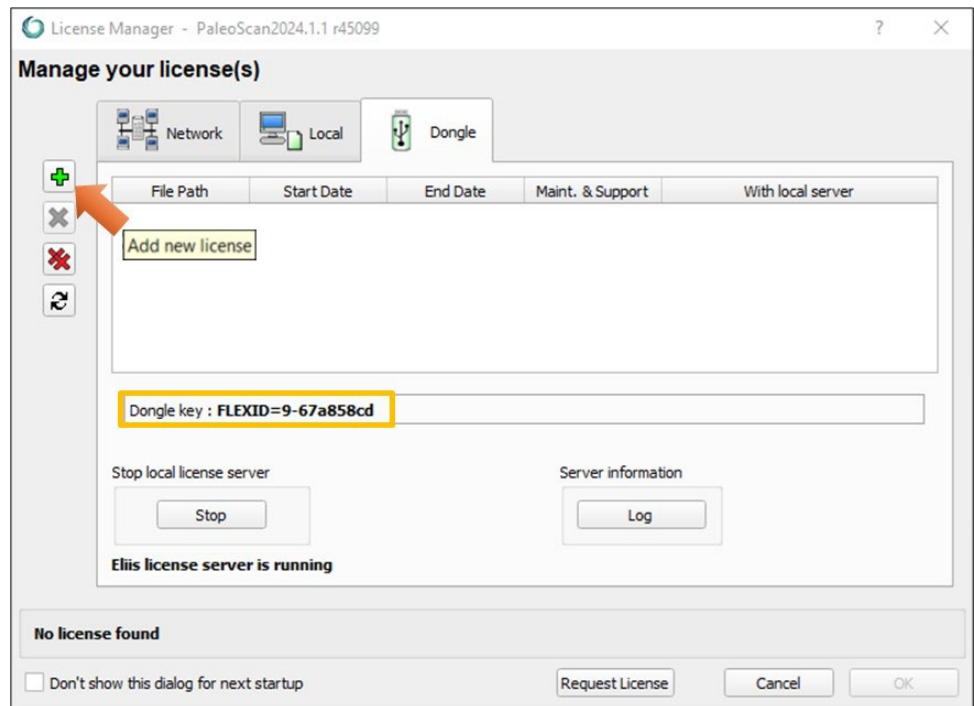
- Select the **Dongle** tab.



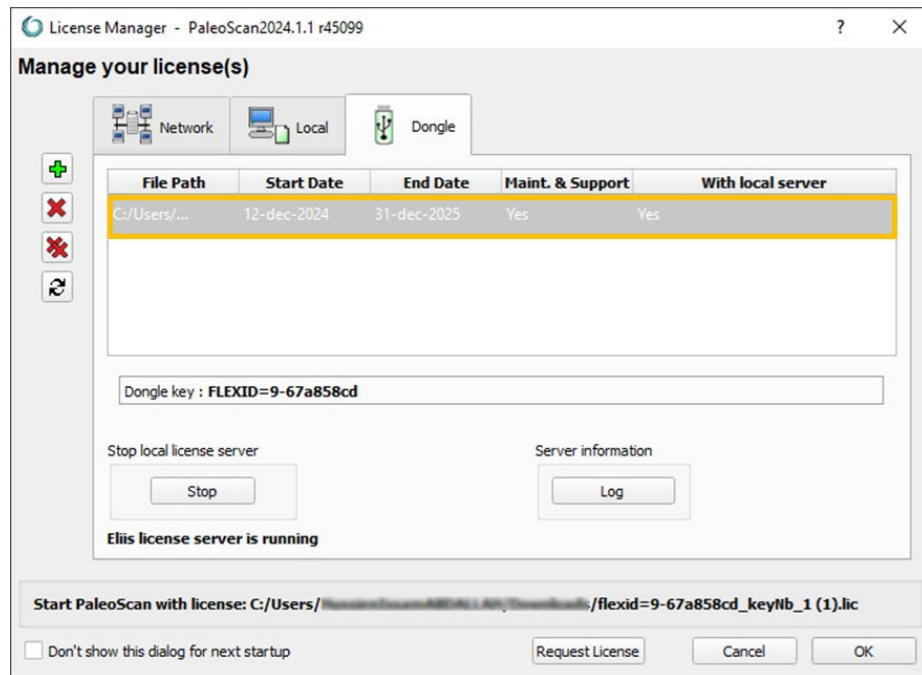
- If the dongle key has not been inserted yet, plug it. The dongle key ID must be displayed. If not, please check the [chapter D. Common issues](#).



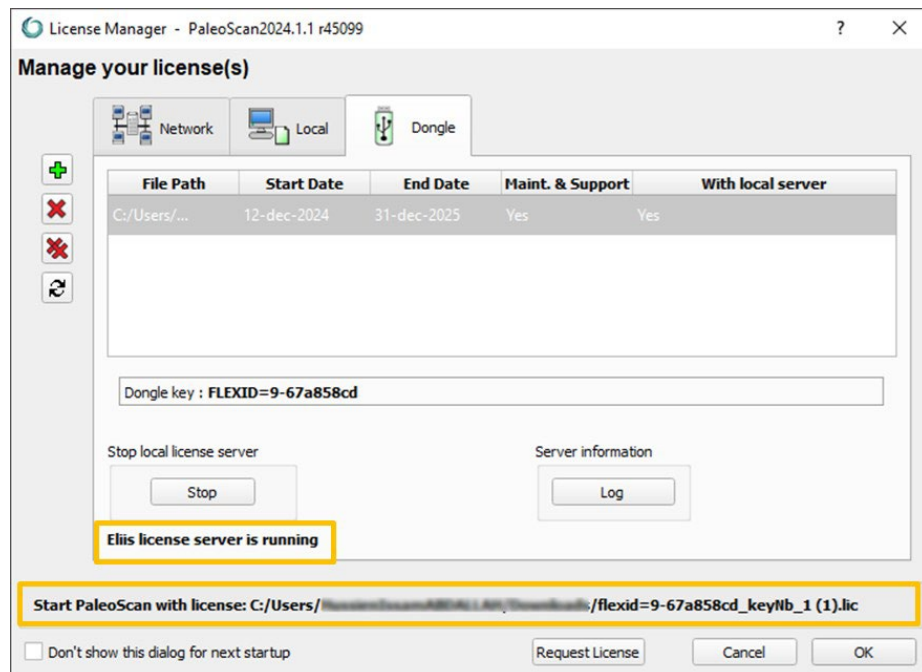
- Select the dongle license file using the icon  called **Add new license**:



- If the selected license is valid, a new row displaying the license details is inserted inside the license file list:



- Once the license file is displayed in the license list, it must be selected by double-clicking on it:



2. Start PaleoScan™

Depending on the local license type, a local server may have to be run.

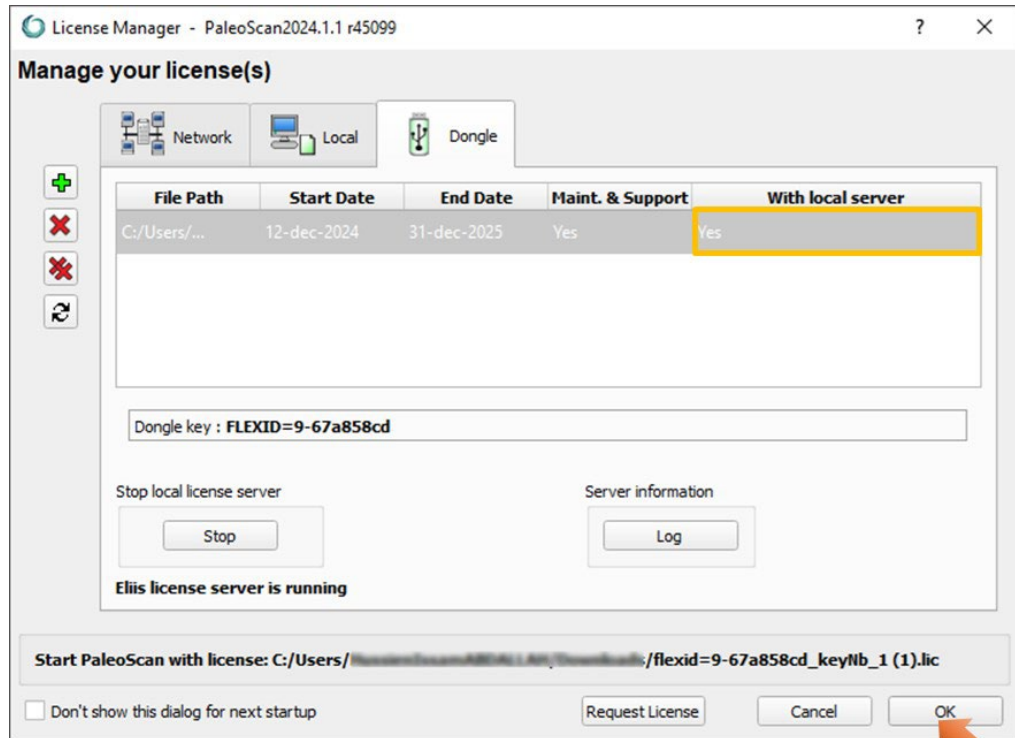
This information is displayed in the column named **with local server** from the license list table.

a) If the local server value is set to No

- No local server is required: Click on the OK button to start the software using the selected license.

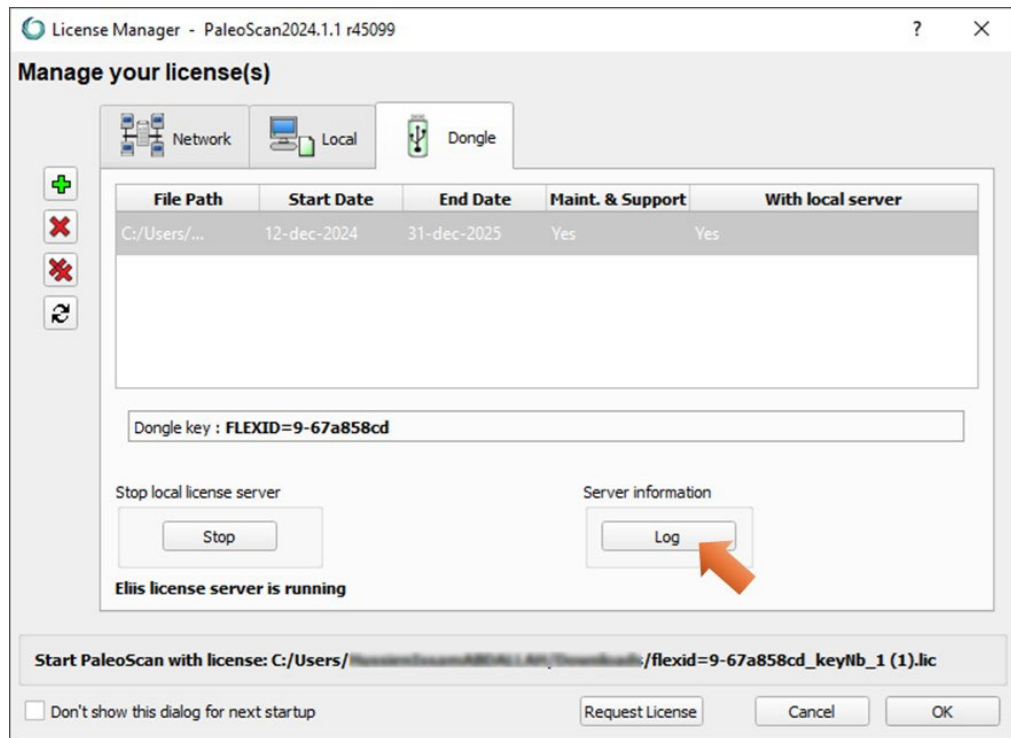
b) If the local server value is set to Yes

- A local server is required: If no local server is running (the message *No Eliis license server is running on the local machine is shown*), Select the local license from the list:



- Click on the **OK** button to start the software using the selected license. If you open again PaleoScan™, the local server state message will be updated to **Eliis license server is running**.

Note: If the local server does not start, please read the [common issues chapter](#). The server log file may also help. Click on the **Log** button to open it:



Note: Activation may require administration rights.

D. Common issues

1. The local server does not start

a) Define a custom port

If there are other software based on Flexera software licensing system running on the machine, there may be some port conflicts. To avoid such issue, edit the license file and specify a custom (unused) port number (from 27000-27009):

```
SERVER alpha 50eeeeeeee 27005
VENDOR eliis
FEATURE [...]
```

b) Another server is running

There may be unexpected **lmgrd.exe** processes or **eliis.exe** running. Close PaleoScan™, kill all **lmgrd.exe** processes, and restart the local license server.

2. The dongle key is not detected

a) Drivers are missing

Check that the file named **haspsrm_win64.dll** is inside the **System32** folder inside your Windows directory. If not, please try to copy it manually. An instance of the file is available in the PaleoScan™ installation folder.

If the folder is read-only, it is possible to force Windows to use the DLL located in the PaleoScan™ folder by specifying its path inside the Windows user environment variable named **FLEXID_LIBRARY_PATH**.



Copyright Notice

All rights reserved. No part of this document may be reproduced, stored in a retrieval system, or translated in any form or by any means, electronic or mechanical, including photocopying and recording, without the prior written permission of Eliis SAS, 3 Rue Jean Monnet, 34830 Clapiers, FRANCE.

Disclaimer

The use of this product is governed by the PaleoScan™ Software License Agreement. Eliis makes no warranty, expressed, implied, or statutory, with respect to the product described herein and disclaims without limitation any warranty of merchantability or fitness for a particular purpose. Eliis reserves the right to revise the information in this manual at any time without notice.

Contact

For any information request, you can contact us.

Web: www.eliis-geo.com

Europe - Montpellier
Eliis SAS

contact@eliis.fr
+33 (0) 4.67.41.31.16
+33 (0) 4 30 96 61 33
(support)

North America - Houston
Eliis Inc.

contactus@eliis.fr
+1 832 304 9817

Australia - Perth
Eliis Pty Ltd

contactau@eliis.fr
+61 434 352 642

Malaysia – Kuala Lumpur
Eliis Sdn Bhd

contactmy@eliis.fr
+60 3 4810 3821

Brazil – Rio de Janeiro
Eliis Ltda

contactbr@eliis.fr
